



Base Mounts & Accesories

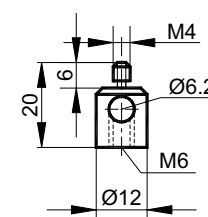
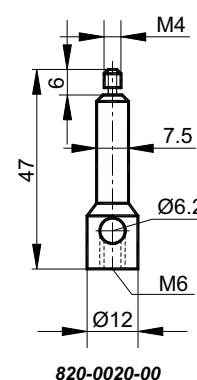
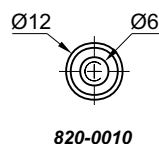
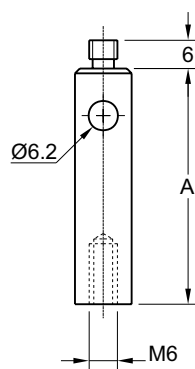
820-0010 • 820-0020 STANDARD RODS



These 12 mm diameter stainless steel rods have M6 male threads on the top and M6 tapped holes on the bottom. It allows to mount all accessories directly on the rod, or to fix the rod directly on movable bases,

translators, or to connect the rods. Cross hole at the top of the rod is very convenient for rigid fastening.

Rods are available in four sizes.



The rod 820-0020-00 is especially designed for Precision Mirror Mount (eg. 840-0060) as well as for other mounts with mounting holes M4.

Rod 820-0020 has M4 male thread for the top and M6 thread hole on the bottom.

Code	Page
840-0060	5.66

Code	Height, mm (A)	Weight, kg
820-0010-02	50	0.04
820-0010-04	100	0.09
820-0010-06	150	0.13
820-0010-08	200	0.17
820-0020-00	–	0.02
820-0020-20	–	0.01

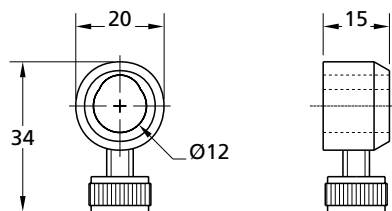
820-0030

COLLAR



The 820-0030 collar allows to fix model 820-0010 standard rods at desirable height and to rotate the rod without changing height.

Finish: black anodized aluminium.



Code	Weight, kg
820-0030	0.01

Complementary Products

Code	Page
820-0010	5.37

820-0040

ROD TRANSLATORS



820-0040-04

820-0040-02

The model 820-0040 rod translators provide stable mounting, vertical translation and fixing in place of model 820-0010 rods. One round turn of knurled collet produces 2 mm linear translation of rod with no rotation.

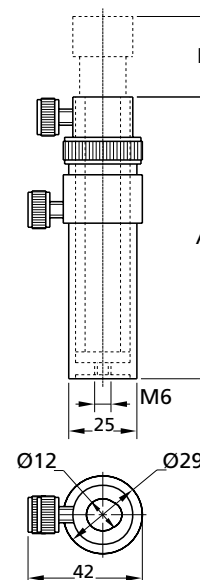
Both the rod and translator bore are double-bored to form two line contacts in the inner wall for rigid lock down. Coarse and precision adjustments are fixed by thumbscrews.

Finish: black oxidized steel.

Code	Height A, mm	Translation range B, mm	Weight, kg
820-0040-02	67	16	0.22
820-0040-04	105	50	0.30

Complementary Products

Code	Page
820-0010	5.37



820-0050

ROD HOLDERS



820-0050-08

820-0050-06

820-0050-04

820-0050-02

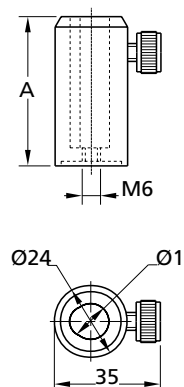
The model 820-0050 rod holders provide convenient and reliable model 820-0010 rod mounting and positioning at fixed height. To eliminate rod wobble, the inside diameter of rod holders is double-bored, providing two full-length contacts in the holder wall to support the rod along its entire length. Model 820-0050 holders can be mounted directly to a table by model 820-0260 screw as well as on bases, fixing by M6 bolts.

Finish: black anodized aluminium.

Code	Height A, mm	Weight, kg
820-0050-02	50	0.05
820-0050-04	80	0.07
820-0050-06	100	0.08
820-0050-08	150	0.11

Complementary Products

Code	Page
820-0010	5.37
820-0260	5.49



OPTICAL TABLES
BRACKETS & RAILS
BASE MOUNTS & ACCESSORIES
OPTICAL MOUNTS
OPTICAL POSITIONERS
BASE POSITIONERS
TRANSLATION & ROTATION STAGES
ADJUSTMENT SCREWS
MOTORIZED POSITIONERS
OPTO-MECHANICS SETS

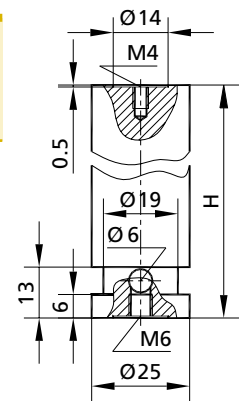
820-0055
FIXED PEDESTALS


- Solid (Ø25 mm) stainless steel rod
- Random positioning
- Exceptional stability

Code	Height H,mm	Weight, kg
820-0055-05	25	0.08
820-0055-10	50	0.17
820-0055-15	75	0.26
820-0055-20	100	0.36
820-0055-30	150	0.55

Complementary Products

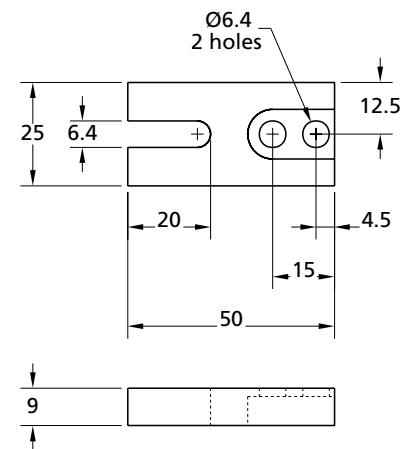
Code	Page
820-0125	5.42


820-0060
MOVABLE BASE


The 820-0060 movable base is especially convenient for close space situations. Its primary use is to position rods and small riser blocks.

Finish: anodized aluminium.

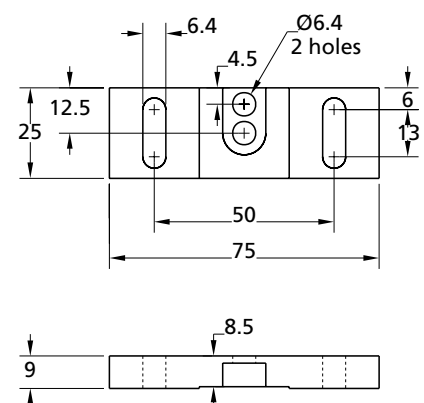
Code	Weight, kg
820-0060	0.02


820-0070
MOVABLE BASE


The 820-0070 movable base has 13 mm translation range. It is useful for small rod holders and riser blocks mounting.

Finish: anodized aluminium.

Code	Weight, kg
820-0070	0.03

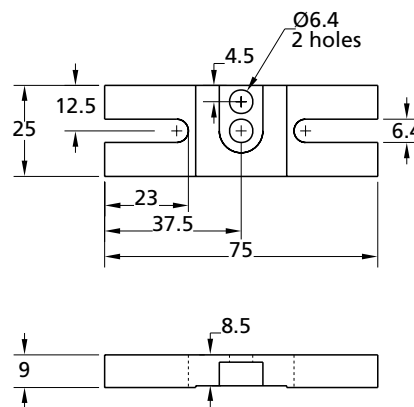


820-0080 **MOVABLE BASE**



The 820-0080 movable base provides translation of mounted rod holders, translators over 13 mm range with rigid lockdown.
Finish: anodized aluminium.

Code	Weight, kg
820-0080	0.03

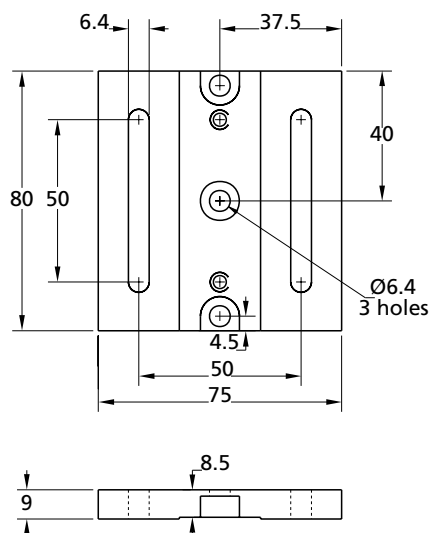


820-0090 **MOVABLE BASE**



The 820-0090 movable base provides 50 mm longitudinal translation of one or two mounted rod holders, translators or riser blocks.
Finish: black anodized aluminium.

Code	Weight, kg
820-0090	0.11



OPTICAL TABLES

BRACKETS & RAILS

BASE MOUNTS & ACCESSORIES

OPTICAL MOUNTS

OPTICAL POSITIONERS

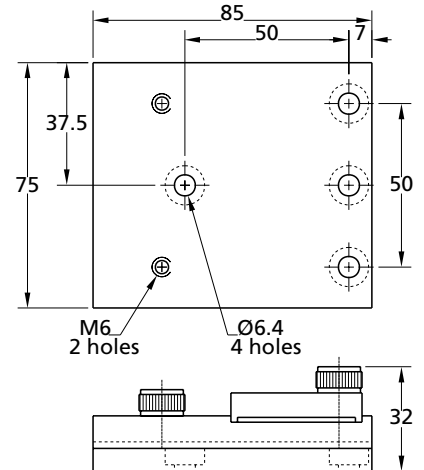
BASE POSITIONERS

TRANSLATION & ROTATION STAGES

ADJUSTMENT SCREWS

MOTORIZED POSITIONERS

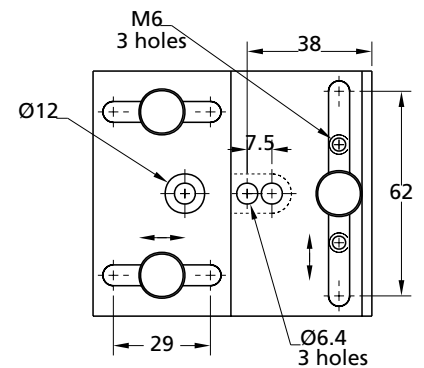
OPTO-MECHANICS SETS

820-0100
MOVABLE BASE


The 820-0100 adjustable base provides separate X-Y adjustment. It is cost-effective solution of non-critical two axes positioning of rod holders, translators and riser blocks.

Finish: black anodized aluminium.

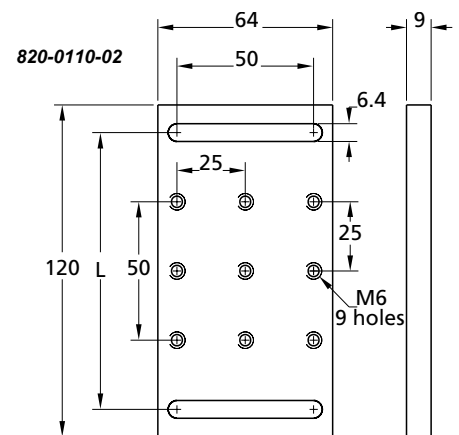
Code	Weight, kg
820-0100	0.30


820-0110
TABLE BASES


820-0110-02



820-0110-04

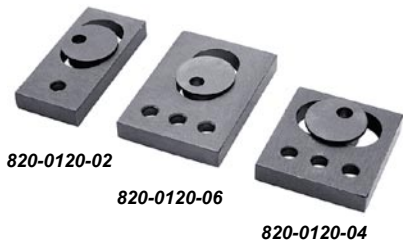


The 820-0110-02 and 820-0110-04 standart table bases with 9 and 12 threaded M6 holes respectively allow positioning of all basemounted accessories with M6 tapped holes or male threads anywhere on a table fixing by M6 screws or 820-0230-02 and 820-0230-04 table clamps. Two slots, with 100 or 125 mm distance allow longitudinal positioning along a line of holes in the table.

Finish: black oxidized steel.

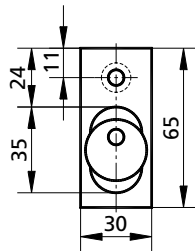
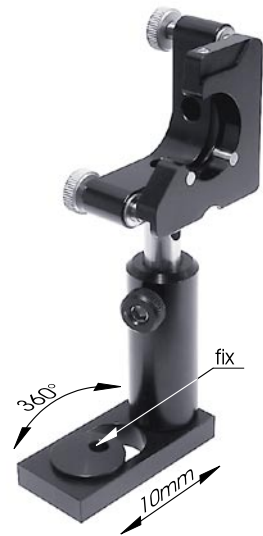
Code	Dimensions, mm	L, mm	Weight, kg
820-0110-02	120×64	100	0.48
820-0110-04	145×64	125	0.57

820-0120 BASE PLATES WITH ECCENTRIC CLAMP

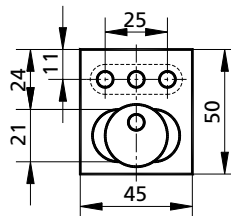


Bases 820-0120 are used to clamp posts and post holders in random positions. Attach a post to the base using an M6 screw. Set the position. The base rotates around the clamp through 360° and translates within 10 mm. Fix the clamp with an M6 screw. The base is made of black anodized aluminium.

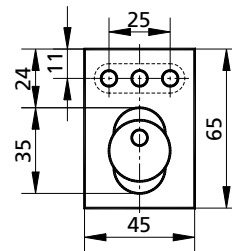
Code	Weight, kg
820-0120-02	0.11
820-0120-04	0.12
820-0120-06	0.15



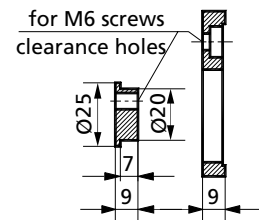
820-0120-02



820-0120-04



820-0120-06



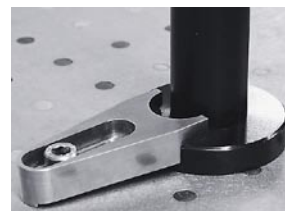
side view of the bases

820-0125 TABLE CLAMP



Material: stainless steel.

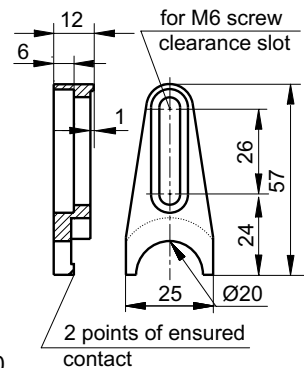
Code	Weight, kg
820-0125	0.05



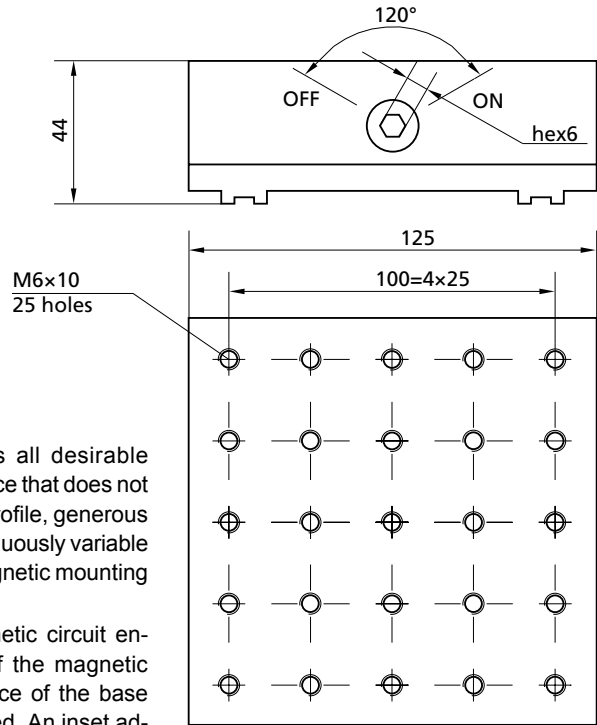
For mounting 795-0010 rods or 820-0055 pedestals to tables, you may use thread adapters 795-0016 and 820-0125 clamp.

Complementary Products

Code	Page
795-0010	5.21
795-0016	5.21
820-0055	5.39



820-0140 LOW-PROFILE MAGNETIC BASE



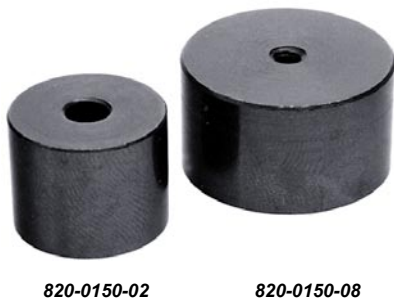
- Highest holding force – up to 140 kg
- Nonmagnetic mounting surface
- M6 mounting holes pattern on 25 mm centers
- Low field leakage

Magnetic base combines all desirable features: a high holding force that does not degrade with time, a low profile, generous mounting provisions, continuously variable holding force, and non magnetic mounting surface.

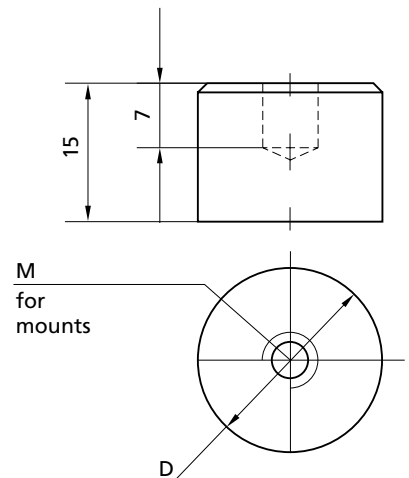
An exclusive stable magnetic circuit ensures linear translation of the magnetic elements. The holding force of the base may be continuously varied. An inset adjustment screw is conveniently accessible. We supply a Hex Key with each base.

Code	Weight, kg
820-0140	2.8

820-0150 COMPACT MAGNETIC BASES

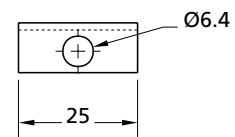
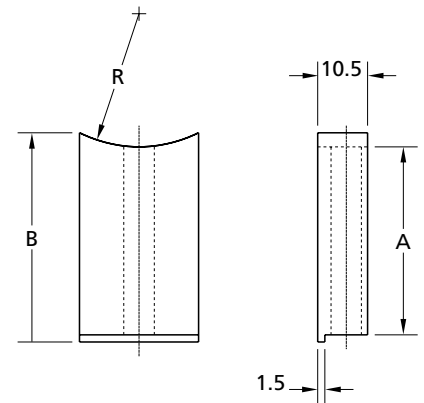
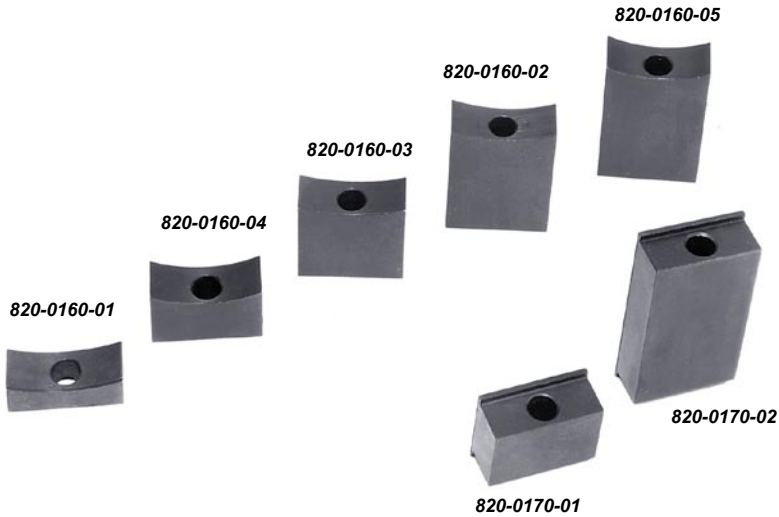


Small components may be quickly positioned on ferromagnetic optical tables and breadboards or translation stages using Compact Magnetic Bases 820-0150.



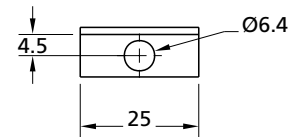
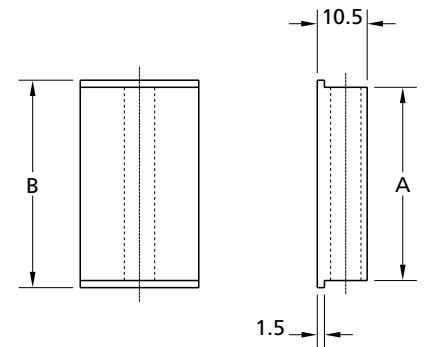
Code	D, mm	M	Holds load up to, kg	Weight, kg
820-0150-02	19	M6	5	0.03
820-0150-04	19	M4	5	0.03
820-0150-06	27	M6	10	0.06
820-0150-08	27	M4	10	0.06

OPTICAL TABLES
BRACKETS & RAILS
BASE MOUNTS & ACCESSORIES
OPTICAL MOUNTS
OPTICAL POSITIONERS
BASE POSITIONERS
TRANSLATION & ROTATION STAGES
ADJUSTMENT SCREWS
MOTORIZED POSITIONERS
OPTO-MECHANICS SETS

820-0160 • 820-0170 RISER BLOCKS

820-0160

The 820-0160 and 820-0170 series riser blocks interface with all optical mounts and holders providing rigid mounting of components at desirable optical axis height.

Finish: black anodized aluminium.

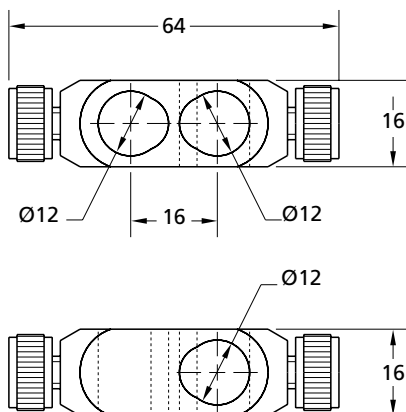

820-0170

Code	Mountable element	Axis height, mm	A, mm	B, mm	R, mm	Weight, kg
820-0160-01	830-0010; 830-0080; 830-0030-02	50	7	11	34	0.01
820-0160-02	830-0010; 830-0080; 830-0030-02	75	32	36	34	0.02
820-0160-03	830-0020; 830-0030-04	75	22	25.5	44	0.01
820-0160-04	830-0060; 830-0070	50	13	17.6	28	0.01
820-0160-05	830-0060; 830-0070	75	38	42.6	28	0.02
820-0170-01	840-0160; 840-0170; 840-0010; 840-0020; 840-0030	50	16	19	–	0.01
820-0170-02	840-0160; 840-0170; 840-0010; 840-0020; 840-0030	75	41	44	–	0.03

Complementary Products

Code	Page	Code	Page
830-0010	5.50	840-0010	5.57
830-0020	5.50	840-0020	5.57
830-0030	5.51	840-0030	5.57
830-0060	5.54	840-0160	5.80
830-0070	5.54	840-0170	5.80
830-0080	5.54		

820-0180 **ROD CLAMP**

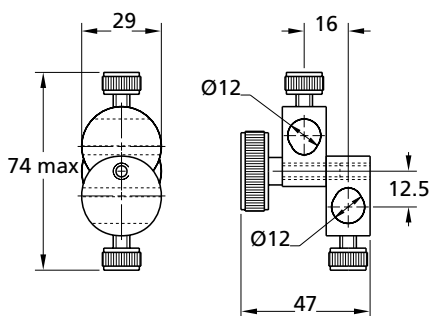


The 820-0180 clamp mounts two standard rods at right angle with respect to each other.

Finish: black anodized aluminium.

Code	Weight, kg
820-0180	0.02

820-0190 **ROD CLAMP**

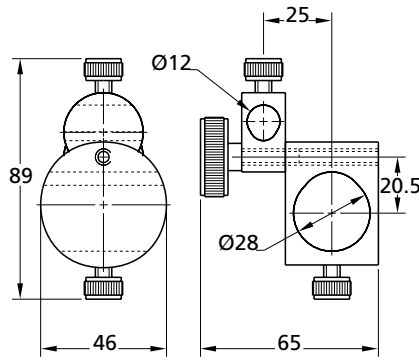


The 820-0190 clamp mounts two standard rods at desirable angle with respect to each other. The construction of clamp allows positioning of one rod without loosening of other.

Finish: black anodized aluminium.

Code	Weight, kg
820-0190	0.06

- OPTICAL TABLES
- BRACKETS & RAILS
- BASE MOUNTS & ACCESSORIES
- OPTICAL MOUNTS
- OPTICAL POSITIONERS
- BASE POSITIONERS
- TRANSLATION & ROTATION STAGES
- ADJUSTMENT SCREWS
- MOTORIZED POSITIONERS
- OPTO-MECHANICS SETS

820-0200
ROD CLAMP


The 820-0200 clamp holds standard and large rods at desirable angle with respect to each other.

Finish: black anodized aluminium.

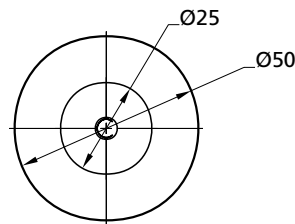
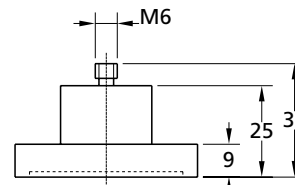
Code	Weight, kg
820-0200	0.12

820-0210 • 820-0220
SOLID BASE HEIGHT EXTENDERS

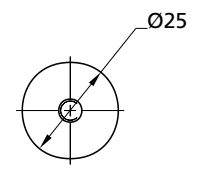
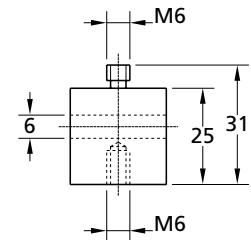

820-0210



820-0220



820-0210



820-0220

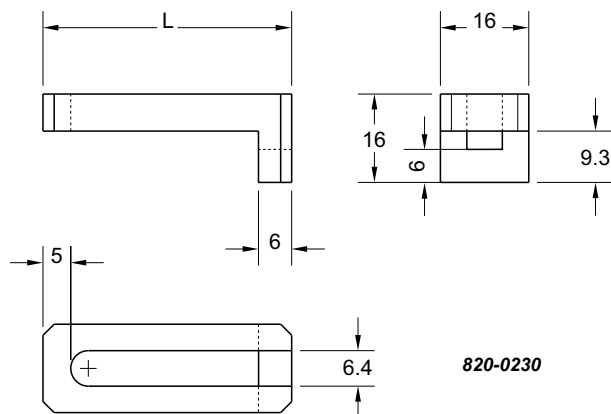
The 820-0210 solid base provides mounting of components at fixed optical axis height. It adds 25 mm height for every component to be mounted on. The 820-0220 height extender adds another 25 mm. After positioning solid base can be reliably fixed to a table with 820-0230-02 or 820-0230-04 clamps. Finish: black anodized aluminium.

Code	Weight, kg
820-0210	0.06
820-0220	0.03

Complementary Products

Code	Page
820-0230	5.48

820-0230 TABLE CLAMPS



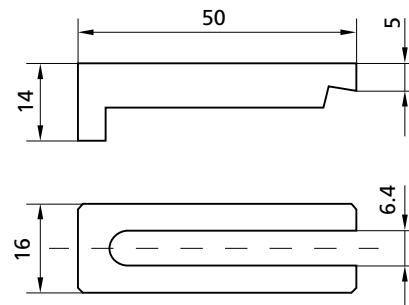
The 820-0230-02 and 820-0230-04 clamps provide fixing of movable bases and other components to a surface with M6 tapped holes. It is useful when direct mounting of components is not practical. Finish: black oxidized steel.

Code	L, mm	Weight, kg
820-0230-02	45	0.026
820-0230-04	60	0.03

820-0240 TABLE CLAMP



Using Table Clamps 820-0240 you can position most base mounted components at any angle on the table and have not to be limited by mounting hole pattern of the optical table. For using clamps the device is positioned so that the slot of the clamp is over the base and a screw can be inserted into a tapped hole. Tightening this screw can generate sufficient force for most mounting applications.

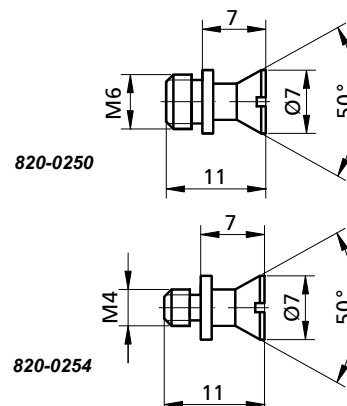


Code	Weight, kg
820-0240	0.03

820-0250 • 820-0254 CONNECTING CONES



Connecting Cones are particularly useful for connecting elements when specific orientation plane is required, e.g. Narrow Translation Stages 860-0060-02 (860-0060-04) for X-Y or X-Z combination. Connecting cone is made of black finished steel and has M6 (M4) thread at one end and 50° cone in another. A component is fastened to the cone using an additional fastening screw.



Code	Weight, kg
820-0250	0.01
820-0254	0.01

OPTICAL TABLES
BRACKETS & RAILS
BASE MOUNTS & ACCESSORIES
OPTICAL MOUNTS
OPTICAL POSITIONERS
BASE POSITIONERS
TRANSLATION & ROTATION STAGES
ADJUSTMENT SCREWS
MOTORIZED POSITIONERS
OPTO-MECHANICS SETS

820-0270
HEX KEY
820-0260 • 820-0280
SCREWS

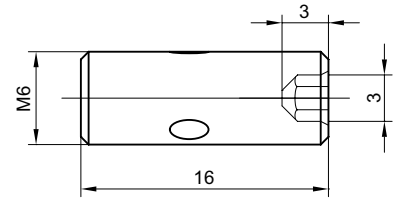

820-0270



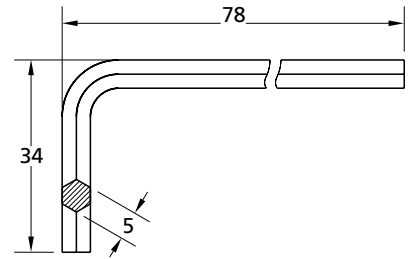
820-0260

The "L" shaped 820-0270 hex key is very convenient in all mounting situations. The 820-0260 screw is very useful for mounting of rods, rod holders, large rod 810-0040 directly to the table top or where M6-M6 connection is required. M6-M4 adapters are also available.

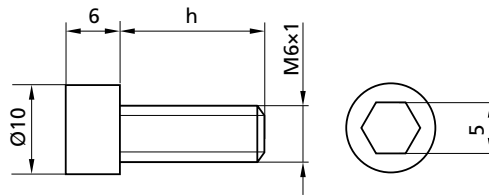
Code	Weight, kg
820-0260	0.005
820-0270	0.020



820-0260



820-0270



820-0280



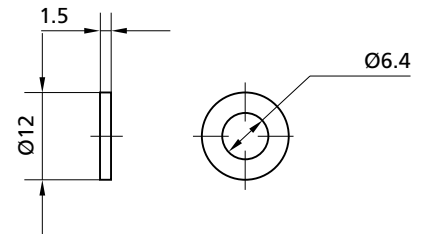
These hex socket head cap screws are available in different lengths.

Code	Length h, mm	Weight, kg
820-0280-01	10	0.04
820-0280-02	16	0.05
820-0280-03	20	0.06
820-0280-04	25	0.07
820-0280-05	30	0.08
820-0280-06	45	0.11
820-0280-07	50	0.12

820-0290
WASHER


A Washer is made of black finished steel and is used for protecting of surfaces from scratches and provides more stabile tightening.

Code	Weight, kg
820-0290	0.005



OPTICAL TABLES
 BRACKETS & RAILS
 BASE MOUNTS & ACCESSORIES
 OPTICAL MOUNTS
 OPTICAL POSITIONERS
 BASE POSITIONERS
 TRANSLATION & ROTATION STAGES
 ADJUSTMENT SCREWS
 MOTORIZED POSITIONERS
 OPTO-MECHANICS SETS